



## ***Road Construction***

***Local Regional National***



**Hanly Quarries Limited, Laragan, Elphin, Co. Roscommon, Ireland.**  
**T: +353 (0) 7196 30000 E: [info@hanlyquarries.com](mailto:info@hanlyquarries.com)**



## Introduction

Hanly Asphalt is a wholly owned subsidiary of the Hanly Group which was established in 1969 and to date is actively involved in quarrying, construction, hospitality, residential and commercial development.

Hanly Quarries operates two quarries; a homogeneous limestone quarry and a high PSV grey whacky stone quarry. The company is involved in the blasting, manufacture and sale of all quarry products including all grades of aggregate, concrete blocks, road making materials, specialist in high PSV surfacing stone and suppliers of the full range of standard and proprietary bituminous products for the infrastructure and construction industry. Our expansive quarry premises hosts a most modern low carbon asphalt plant supported with a fleet of equipment for the construction of roads comprising truck pavers, rollers and support plant.

Hanly Quarries has been constructing roads since the mid 1980's building sections of the N4 and N5 national primary routes to include many regional and local roads in Roscommon, Leitrim, Longford, Galway and Mayo areas, in addition to the internal road networks of thousands of homes in residential developments.





## Asphalt Plant

The company has erected a most modern Asphalt Plant and in conjunction with INTRAME (the manufacturer) has constructed a low emissions plant considered to be the most carbon friendly of any plant recently constructed by the company.



## Lower Carbon Asphalt

Hanly Asphalt is at the frontier of producing lower carbon asphalt. This is done with upgrade modifications to our plant. Said modifications include the following: -

1. Complete electrification to low energy heating elements of the bitumen tanks where same are traditionally heated by oil.
2. The complete encapsulation of the plant to include all working elements of same which reduces wind chill, heat loss and reduces the amount of fuel necessary to heat the stone.
3. The pre drying of all aggregates in a custom designed building, again significantly reducing the amount of fuel required to bring the stone to a workable temperature.

This work has resulted in a significant reduction in the energy required to run the plant and has manifested in exceptionally low readings (As Audited by an approved INAB Standard to ISO 17025) below our approved Emission's Licence limits in terms of: -

- Sulphur – reading at 99% below approved licence limits.
- Dust particulate – reading at 75% below approved licence limits.
- NOx – reading at 83% below approved licence limits.

A visual audit of nationwide competitors' plants in addition to discussions with the manufacture of our plant would confirm that the plant at Hanly Quarries is unsurpassed and at the forefront in terms of encapsulation which demonstrates a commitment and foresight by the company in achieving lower carbon asphalt.



## Raw Materials

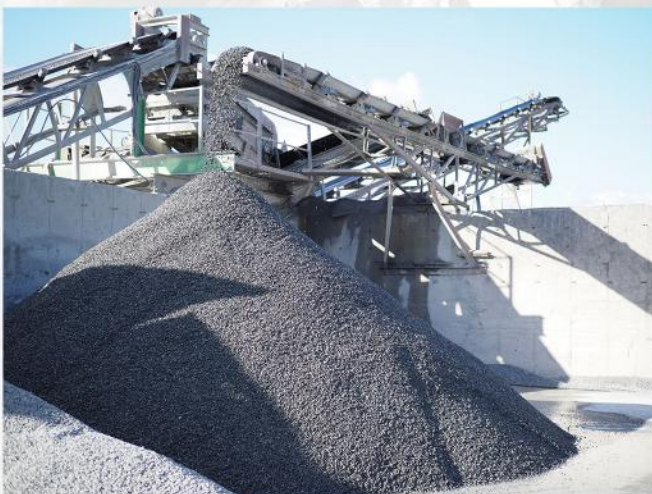
Hanly Quarries produces to NSAI certified standards all grades of limestone aggregate and all grades of high PSV washed stone aggregate to NSAI standards

**I.S. EN 13043** Aggregates for bituminous mixtures and surface treatments for roads, airfields and other trafficked areas.

**I.S. EN 13242:2002 + A1 2007** Aggregates for unbound and hydraulically bound materials for use in civil



This allows Hanly Asphalt to ensure that the quality of aggregates for its asphalt and bituminous materials are to a high standard and enables Hanly Asphalt to assume direct control over quality and is not dependent on third parties. All Aggregates for our Asphalt Plant are stored under cover.





## Products

### Asphalt Concrete

Bituminous Macadam or Asphalt Concrete is a mixture of aggregates, filler and bitumen and can be dense, medium or open graded depending on the end application.

Macadams are classified into three main layer categories; Base, Binder and Surface Course.

Base and Binder course materials usually form the lower layers of a pavement. These layers give the pavement its load bearing capability.

Asphalt Concrete is used in National and Non National Roads, driveways, car parks pathways, etc...



### Stone Mastic Asphalt

Stone Mastic Asphalt surface course materials are produced using high quality aggregates, bitumen and sometimes Polymer Modified Bitumen (PMB). Hanly Asphalt produces a PMB SMA and a standard SMA for different applications. The PMB SMA is for more heavy duty requirements with larger traffic movements; the standard SMA is designed for less traffic movements such as house fronts and driveways.



### Hot Rolled Asphalt

Hot Rolled Asphalt (HRA) is a predominantly sand based bituminous mix. HRA is a durable surfacing material its high sand and binder content make it near impervious. It has a wide range of uses from private works to National and Non National Roads. In 30% and 35% HRA mixes, pre coated chippings are applied to its surface at determined spread rates to provide texture.





## Road Surfacing

Hanly Asphalt has a highly experienced road surfacing team with 30 – 40 years experience in road construction. The company operates a full range of pavers from the spreading of wet mix hardcore to the full suite of bituminous products.

### Products

Hanly Asphalt produces the following products to NSAI standards: -

- I.S. EN 13108-1 Asphalt Concrete**
- I.S. EN 13108-2 Asphalt Concrete for Very Thin Layers**
- I.S. EN 13108-4 Hot Rolled Asphalt**
- I.S. EN 13108-5 Stone Mastic Asphalt**
- I.S. EN 13108-7 Porous Asphalt**






# Asphalt Surfacing Equipment

No	Surfacing Equipment Type
4	Ford Welfare Van
3	Support/Equipment Vans/Tipper Pickups
2	Isuzu Crew Cab Tipper 7.5 ton
3	Isuzu Tipper 3.5 ton
2	25 tonne JCB Vibromax Roller
3	Hamm/Bomag hd 1.0m Rollers
2	Hamm/Bomag hd 1.2m Rollers
2	Bomag 1.38m Rollers
2	Hamm HD 80 ( 1.7mm) Rollers
1	Aveling 3 Pin Dead Weight HRA
1	Hamm 3 Pin Dead Weight HRA
1	Dynapac 3 Pin Dead Weight HRA
3	Blawknox Paver BK 90 (804)
1	Vogele Paver 1303 3i
1	Vogele Paver 1803 3i
3	Volvo Paver A6890
2	Gehl Skid Steer R165
24	Lorries with Insulated bodies
1	HRA Chipper M95
1	HRA Chipper Bristowes
1	HRA Chipper Pavemac
2	Wirtgen Planer A100Fi
1	Phoenix MK7 Surface Dress Chipper
2	Pneumatic Hamm Rollers GW18 & GW15
2	Fendt & John Deere Tractors
2	Water Tankers 15000 & 26000 litres
1	Wirtgen WS 250 Road Recycler
1	JCB2CX Compact with Rockbreaker
3	6 & 9 Tonne Dumpers
1	Volvo 4-Wheel Excavator
5	3, 5, 10 & 13 Tonne Excavators
2	Mobile Welfare Unit
85	Items of specialist plant






## Roadworks 2021

	2021
Roads Roscommon Co Co Boyle MD	
<b>Total AC20 &amp; HRA on 15 Roads</b>	<b>13.5KM</b>
Roads South Leitrim Co Co Ballinamore MD	
<b>Total AC20 /14 and SMA 14 on 25 Roads</b>	<b>32.6KM</b>
Roads Mid Longford Co Co MD	
<b>Total AC20 &amp; SMA 14 on 12 roads</b>	<b>4.8KM</b>
Roads South Longford Co Co MD	
<b>Total AC20/ 804 Road Stavbilisation on 20 roads</b>	<b>8.4KM</b>



	2022
Roads Roscommon Co Co /TII N61 P1	
<b>AC20 &amp; HRA in Athlone</b>	<b>3.2KM</b>
Roads Roscommon Co Co /TII N61 P2	
<b>SMA &amp; HRA in Athlone</b>	<b>3.8KM</b>
Roads Galway Co Co Ballinasloe MD	
<b>AC20 and SMA 14 and surface dress on 52 Roads</b>	<b>40KM</b>
Roads South Leitrim Co Co Ballinamore MD	
<b>AC20 and SMA 14 on 39 Roads</b>	<b>35KM</b>
Roads North Longford Co Co MD	
<b>AC20 &amp; SMA 14 on 26 roads</b>	<b>15KM</b>
Roads Mayo Co Co /TII	
<b>AC20 &amp; SMA &amp; HRA in Kiltimagh and Westport</b>	<b>1.5KM</b>
Roads South / Mid Longford Co Co MD	
<b>AC20/ 804 Road Stabilisation on 8 roads</b>	<b>6KM</b>





## Surface Dressing

Surface dressing is a widely used maintenance technique in Ireland and comprises the application of bitumen emulsion and washed high PSV aggregate chippings applied by rolling, typically with a Pneumatic Tyred Rollers (PTR) and a combination of vibratory steel drum rollers.

Surface dressing typically: -

- Improves the skidding resistance which makes the roads safer.
- Helps in making a road waterproof.
- Protects the road against frost and water damage.

Handy Quarries, in preparation for works, typically carries out design sheets to establish emulsion surface spreads, surface dressing type, chipping sizes and chipping types.

Hanly Quarries are manufacturers and suppliers to many local authorities throughout Ireland of HPSV (high polished stone value) chips. These are produced to certified NSAI standards, sized, washed and applied in the surface dressing process.

Hanly Quarries is CE marked in the surface dressing operation for all classes of roads, for both public and private clients.

Hanly Quarries provides an all-in service for road reinstatement, surface preparation, design and application of the final surface dressing.

There is essentially four types of surface dressing: -

- 1.Single surface dressing
- 2.Pad coat plus single surface dressing.
- 3.Racked in surface dressing.
- 4.Double surface dressing.

Surface dressing treatments are cost effective. Before the road is opened it is typically swept to remove excess chippings. Advisory speed limits are put in place to keep traffic speeds to 25kmph until we are confident the dressing has settled down.

We treat roads between April and September because the process needs warm, dry weather to allow the dressing to become established.

[illegible]



## Road Recycling

Hanly Quarries are producers of Clause 804, Clause 810 and Clause 606 stabilised limestone wetmix.

Hanly Quarries has been applying this to build up the foundation of the roads since 1982. More recently Hanly Quarries has supplemented its road stabilisation works with road recycling primarily no increase in level is desired and to make greater use of the foundations of the existing road.

Road recycling involves the milling up of the existing road and then spreading and mixing through appropriate bitumen emulsions and/or the application of a new layer of Clause 804/Clause 810 wetmix using a paver.

Pavement recycling is a technique where the existing degraded pavement is modified and transformed into a homogenous structure that can support the traffic requirements.

Savings have been achieved by opting to recycling and strengthen in-situ existing road surfaces instead of using conventional full depth pavement reconstruction. These works reduce construction cost savings and provide substantial environmental benefits including the reduction of carbon dioxide emissions as well as reduced material transportation and less use of the newly extracted quarry materials. In addition, Hanly Quarries has 40 years' experience of road construction using stabilised wetmix and has carried out works for the municipal districts of Sligo, Leitrim, Longford, Roscommon, Galway, Offaly and Meath.



## Laboratory Testing

The testing facilities, equipment and experienced technical staff at Hanly Quarries provide a valuable resource for research, testing and compliance of Bitumen products, Aggregates and Concrete. Tests are to British, Irish and European standards ensuring compliance with

- I.S. EN 13108-1
- I.S. EN 13108-2
- I.S. EN 13108-4
- I.S. EN 13108-5
- I.S. EN 13108-7
- I.S. EN 206:2013+A2:2021
- EN 13242:2002 + A1 2007
- I.S. EN 13043:2002/AC:2004
- I.S. EN 771-3:2011+A1:2015





## Quality

Hanly Asphalt can ensure quality of its product as it has direct control from the crushing of the rock right through to production, manufacture, delivery and laying of the product on the road ensuring a full and complete service from start to finish.

**NSAI**  
CERTIFICATE OF CONFORMITY OF THE FACTORY PRODUCTION CONTROL

0050 - CPR - 0792 System 2+

In compliance with the Regulation (EU) No 305/2011 of the European Parliament and of the Council of 9 March 2011 laying down harmonised conditions for the marketing of construction products and repealing Council Directive 89/105/EEC, it has been verified that the construction product:

**Aggregate Concrete Masonry Units in accordance with Annex 2A of the following:**

U.S. EN 791	Specification for masonry units - Part 3: Aggregate concrete masonry units (dense and lightweight aggregates)
3.2011-A1:2015	

Placed on the market by:  
Hanly Quarries  
Laragan  
Elphin  
Co. Roscommon F45 Y329

And produced in the factory:  
Hanly Quarries  
Laragan  
Elphin  
Co. Roscommon F45 Y329

Signed: *[Signature]*

Issue Date: 11/03/2015  
Expiry Date: 11/03/2018  
Last amended Date: 11/03/2015  
Issue Date: 11/03/2015  
Expiry Date: 11/03/2018  
Last amended Date: 11/03/2015  
Issue Date: 11/03/2015  
Expiry Date: 11/03/2018  
Last amended Date: 11/03/2015

**NSAI**  
CERTIFICATE OF CONFORMITY OF THE FACTORY PRODUCTION CONTROL

0050 - CPR - 1041 System 2+

In compliance with the Regulation (EU) No 305/2011 of the European Parliament and of the Council of 9 March 2011 laying down harmonised conditions for the marketing of construction products and repealing Council Directive 89/105/EEC, it has been verified that the construction product:

**Bituminous Mixtures in accordance with Annex 2A of the following:**

U.S. EN 13106-1	Asphalt Concrete
U.S. EN 13106-2	Asphalt Concrete for Very Thin Layers
U.S. EN 13106-3	Hot Rolled Asphalt
U.S. EN 13106-4	Stone Mastic Asphalt
U.S. EN 13106-5	Porous Asphalt

Placed on the market by:  
Hanly Quarries Ltd  
Laragan  
Elphin, Co. Roscommon F45 Y329

And produced in the factory:  
Hanly Quarries Ltd  
Laragan  
Elphin, Co. Roscommon F45 Y329

Signed: *[Signature]*

Issue Date: 11/03/2015  
Expiry Date: 11/03/2018  
Last amended Date: 11/03/2015  
Issue Date: 11/03/2015  
Expiry Date: 11/03/2018  
Last amended Date: 11/03/2015  
Issue Date: 11/03/2015  
Expiry Date: 11/03/2018  
Last amended Date: 11/03/2015

**NSAI**  
CERTIFICATE OF CONFORMITY OF THE FACTORY PRODUCTION CONTROL

0050 - CPR - 0452 System 2+

In compliance with the Regulation (EU) No 305/2011 of the European Parliament and of the Council of 9 March 2011 laying down harmonised conditions for the marketing of construction products and repealing Council Directive 89/105/EEC, it has been verified that the construction product:

**Aggregates for bituminous mixtures and surface treatments in accordance with Annex 2A of the following:**

U.S. EN 12518:2010	Aggregates for bituminous mixtures and surface treatments for roads, pavements and other trafficked areas
--------------------	---

Placed on the market by:  
Hanly Quarries  
Laragan  
Elphin  
Co. Roscommon F45 Y329

And produced in the factory:  
Hanly Quarries  
Laragan  
Elphin  
Co. Roscommon F45 Y329

Signed: *[Signature]*

Issue Date: 11/03/2015  
Expiry Date: 11/03/2018  
Last amended Date: 11/03/2015  
Issue Date: 11/03/2015  
Expiry Date: 11/03/2018  
Last amended Date: 11/03/2015  
Issue Date: 11/03/2015  
Expiry Date: 11/03/2018  
Last amended Date: 11/03/2015

**NSAI**  
CERTIFICATE OF CONFORMITY OF THE FACTORY PRODUCTION CONTROL

0050 - CPR - 0451 System 2+

In compliance with the Regulation (EU) No 305/2011 of the European Parliament and of the Council of 9 March 2011 laying down harmonised conditions for the marketing of construction products and repealing Council Directive 89/105/EEC, it has been verified that the construction product:

**Aggregates for on-road and hydraulically bound materials for use in civil engineering work and road construction**

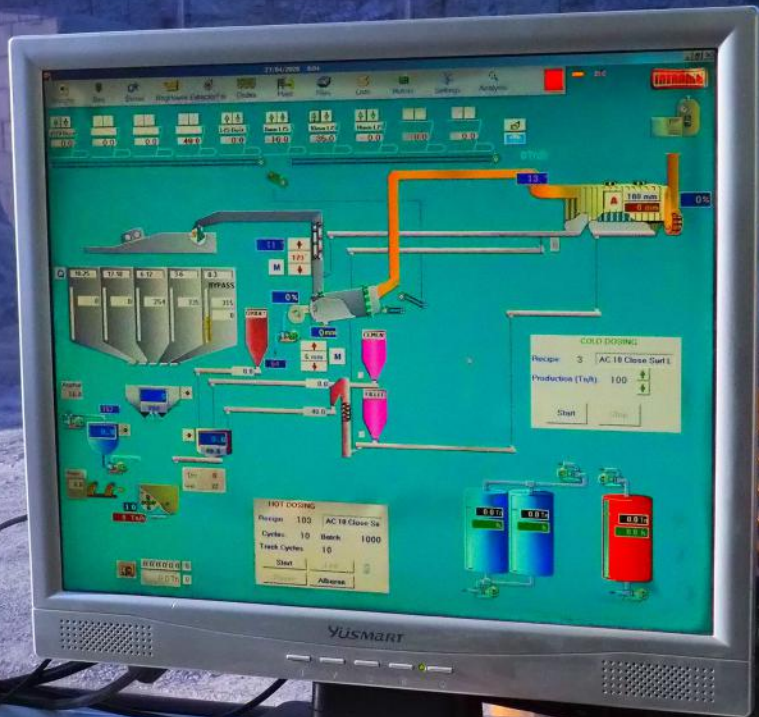
EN 12518:2010	Aggregates for on-road and hydraulically bound materials for use in civil engineering work and road construction
---------------	--

Placed on the market by:  
Hanly Quarries  
Laragan  
Elphin  
Co. Roscommon F45 Y329

And produced in the factory:  
Hanly Quarries  
Laragan  
Elphin  
Co. Roscommon F45 Y329

Signed: *[Signature]*

Issue Date: 11/03/2015  
Expiry Date: 11/03/2018  
Last amended Date: 11/03/2015  
Issue Date: 11/03/2015  
Expiry Date: 11/03/2018  
Last amended Date: 11/03/2015  
Issue Date: 11/03/2015  
Expiry Date: 11/03/2018  
Last amended Date: 11/03/2015





## How to Find As

### Address:

*Hanly Quarries Limited,  
Laragan, Elphin,  
Co. Roscommon, Ireland.  
T: +353 (0) 7196 30000  
E: [info@hanlyquarries.com](mailto:info@hanlyquarries.com)*

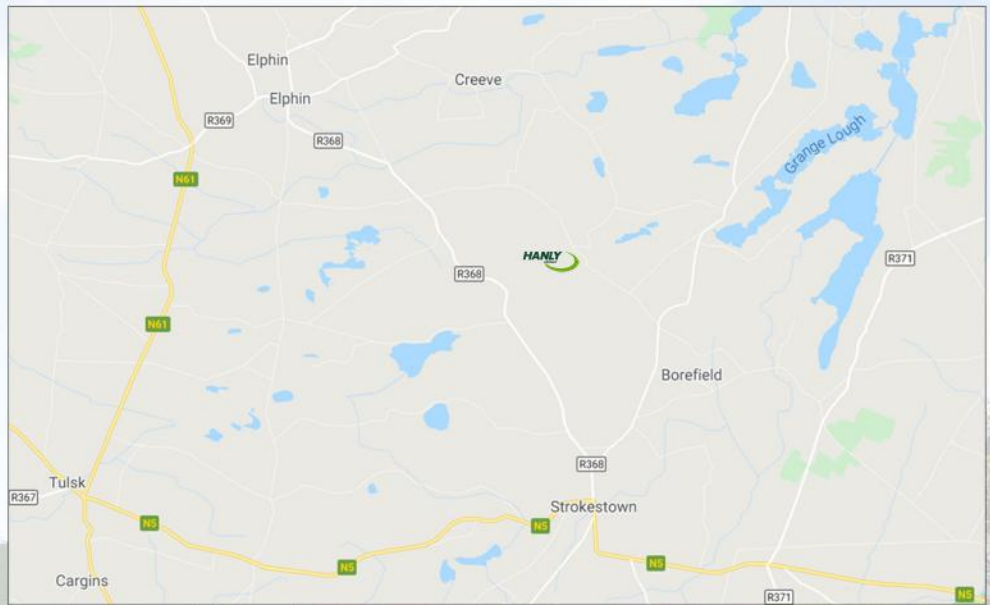
### Contact Details:

Sales Dispatch Manager;  
Alan Tiernan  
T: +353 (0) 7196 35912

Contracts Manager  
TII Works, Recycling  
&  
Surface Dressing Division:  
Michael Oates  
M: +353 (0) 868593595

Contracts Manager  
Blacktop Division;  
George Belton  
M: +353 (0) 867003190

Operations Director;  
Martin Gillen  
T: +353 (0) 719635923  
M: +353 (0) 862198185



**Members of the “Irish Asphalt Pavement Producers Association (IAPA)”**